

# Oxford College Organic Farm Annual Report 2025



EMORY

OXFORD  
COLLEGE

Oxford Organic Farm

# Letter from the Farm



***This year at the Oxford College Farm was marked by steady growth, deepened partnerships, and a continued commitment to education, sustainability, and community well-being. From planting and harvest to teaching and outreach, the farm served as a living classroom and a source of nourishing food for the Oxford community and beyond.***

***Through the dedication of our students, staff, faculty partners, and supporters, the farm remained a place where learning happens by doing—and where care for the land is inseparable from care for people.***

***Thank you for being part of another meaningful year at the Oxford College Farm.***

***Daniel Parson***

***Farmer/Educator, Oxford College Farm***



# Mission & Values

The Oxford College Farm advances Oxford College's educational mission by providing hands-on learning experiences grounded in sustainable agriculture, food justice, and environmental stewardship. The farm supports student learning, campus dining, and community food access while modeling responsible land management.

## ***Our core values include:***

- Experiential learning
- Environmental sustainability
- Community connection
- Equity and access to healthy food
- Student leadership and growth





# **BY THE NUMBERS (YEAR AT A GLANCE)**

- **Total pounds of produce grown: 29,000**
- **CSA shares distributed: 2,140**
- **Farmers markets attended: 36**
- **Oxford College classes hosted: 20**
- **Special events hosted: 8**
- **Students employed: 20**
- **Interns supported: 4**
- **Visitors and volunteers: 209**



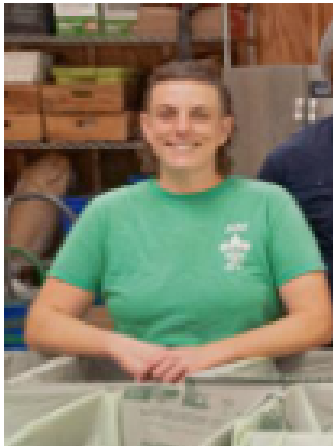
# 2025 OXFORD FARM CREW



JORDAN HASTY  
FIELD MANAGER



URSUS MILLER  
GROWER



BRI SPERRY  
GROWER



JAMILLAH MCWHORTER  
POST HARVEST MANAGER





# 2025 INITIATIVES & ACHIEVEMENTS

- Increased CSA Membership & added a weekly delivery at Grady Hospital
- Hosted an SETOPP Workshop on Organic Pest Management
- Produced 4 videos in collaboration with Oxford College Film Production program
- Restructured our crop rotation allowing a longer cover crop cycle in one field
- Purchased a new electric lawn mower increasing efficiency



# EDUCATIONAL IMPACT

The farm continued to serve as a hands-on learning environment for students across disciplines. Students gained practical skills in sustainable agriculture, teamwork, leadership, and systems thinking. Student learning at the farm emphasizes resilience, responsibility, and reflection—skills that extend far beyond the field.

## Highlights:

- Summer internship program
- Student employment during the academic year
- Workshops and skill-building sessions
- Course collaborations and class visits including:
  - Spanish
  - Physical Education
  - Anthropology
  - Sociology
  - English
  - Environmental Science
  - Discovery Seminar



# ACADEMIC IMPACT

“In my course, we discussed topics such as genetic engineering and environmental pollution. To connect these discussions to real-world practice, we visited the organic farm to learn how these issues are addressed in an applied setting. Students learned about alternative approaches to pesticide use and sustainable farming practices. Students appreciated engaging directly with the farm educator and learning in a different environment that provided practical examples of the concepts discussed in class.”  
~ Simba Nkomo, Chemistry



“We visit the farm to explore how the farm addresses physical, social, environmental, and occupational dimensions of wellness. We lean on Daniel Parson's expertise to talk about how food systems impact student dining, different ways students can engage with the farm and the purpose of having a farm on a liberal-arts campus like Oxford.”  
~ Ruth Geiger, Nutrition & Wellness

# ACADEMIC IMPACT

"I bring students of different levels of Spanish to the farm in order to expand their vocabulary on food and nature in general. I organize a scavenger hunt for them with the farm vocabulary and then I make them create sentences using that vocabulary. The next day in class they have a quiz on it."

~Tanya Davis, Spanish



"The farm serves as a hub for two of our sociology classes - "People & Nature" and "Sociology of Food." In the People & Nature course, students visit the farm as a site where socio-ecological relations are of central importance, where humans grow our food. The farm team gives our students a tour of the farm, outlining its processes and importance for the school and community. In Sociology of Food, students plant their own bed of vegetables, grow them throughout the semester, harvest them, prepare them, and eat them together.

They also do farm work throughout the semester as part of their community-engaged learning for the course. In both classes, the value added is experiential and hands-on learning, where students see - and participate - at sites where course content is centered."

~Deric Shannon, Sociology

# 2025 PRODUCTION HIGHLIGHTS

Throughout the year, the farm remained in full production, growing a diverse range of seasonal fruits, vegetables, and herbs. Produce was distributed through Oxford dining services, the CSA program, and local farmers markets, strengthening campus food systems and community access.

76

**DELIVERIES MADE TO  
DINING HALLS &  
EMORY HOSPITAL**



29,000

**APPROX LBS OF  
PRODUCE GROWN**

# COMMUNITY SUPPORTED AGRICULTURE (CSA)

2,140 CSA boxes distributed to customers in 2025

The Oxford Farm CSA program continued to connect community members with fresh, locally grown food while providing predictable support for the farm.

CSA Highlights:

- Weekly shares during the peak growing seasons (April - November)
- Educational newsletters and recipes distributed each week to CSA members
- Strong customer retention and engagement
- Expanded to a new pick up site at Grady Hospital





# COMMUNITY ENGAGEMENT & PARTNERSHIPS

The Oxford College Farm worked closely with campus and community partners to advance shared goals around education, sustainability, and food access.

Engagement included:

- Farmers markets
- Campus events and tours
- Collaborations with academic departments & wellness festivals
- Outreach and educational programming

These partnerships help extend the farm's impact beyond the field.







# RESEARCH & PARTNERSHIPS

Our team collaboratively continued to grow our farm manual and tutorial video collection. These provide practical guidance on organic farming methods for beginning and transitioning farmers. This project is supported through the USDA Transition to Organic Partnership Program.

Videos added in 2025 included:

- Weeding on an Organic Farm
- Fertilization
- Record Keeping
- Seedling Production & Transplanting



# 2025 COMMUNITY OUTREACH



*The Mt. Zion Baptist Church Food Bank in Oxford, GA, plays a vital role in collecting and distributing food to neighbors in need. We are proud to help support their mission to alleviate food insecurity, serving the local community with dignity, and providing essential food items to families in need.*

**We made  
9 deliveries to  
Mt. Zion Food Bank**

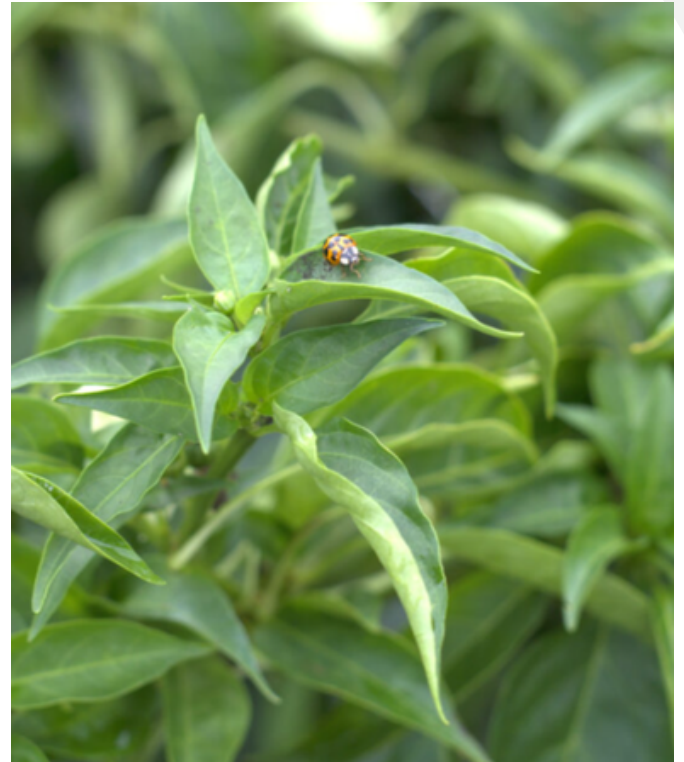
**We donated  
approximately  
600 lbs of produce**



# 2025 COMMUNITY OUTREACH

## Local Community Events:

Our farm team participated in partnership with the City of Oxford to host and attend community events like “Change the World Day”, trail clean-ups, creek clean-ups, & privet pulls.



## Oxford College Farm Plant Sales:

We hosted plant sales in April and October & sold our summer crops, flowers, native plants, and herbs at our local Ace Hardware.




# Looking Ahead

**In the coming year, the Oxford College Farm aims to:**

- **Invest in a bin washing machine so we have clean bins to harvest and pack produce into.**
- **Restructure our crop rotation to improve weed management to work smarter, not harder, by letting the rotation do some heavy lifting in reducing the weeds that go to seed; saving us a lot of work next year.**
- **Bringing back winter squash**
- **Expand educational programming & student learning**
- **Strengthen CSA participation**
- **Increase community partnership opportunities**

**We remain committed to growing food, knowledge, and community together.**





Thank you to our students, staff, faculty partners, CSA members, donors, & community supporters. Your belief in the Oxford College Farm makes this work possible.

*For more information or to get involved, please contact:*

Oxford College Farm

[https://oxford.emory.edu/academics/organic\\_farm.html](https://oxford.emory.edu/academics/organic_farm.html)

